

Mining the ore body

Holes are drilled up into the ore body (or down) and filled with explosives.

Once the explosives are fired, they create large piles of gold bearing ore.

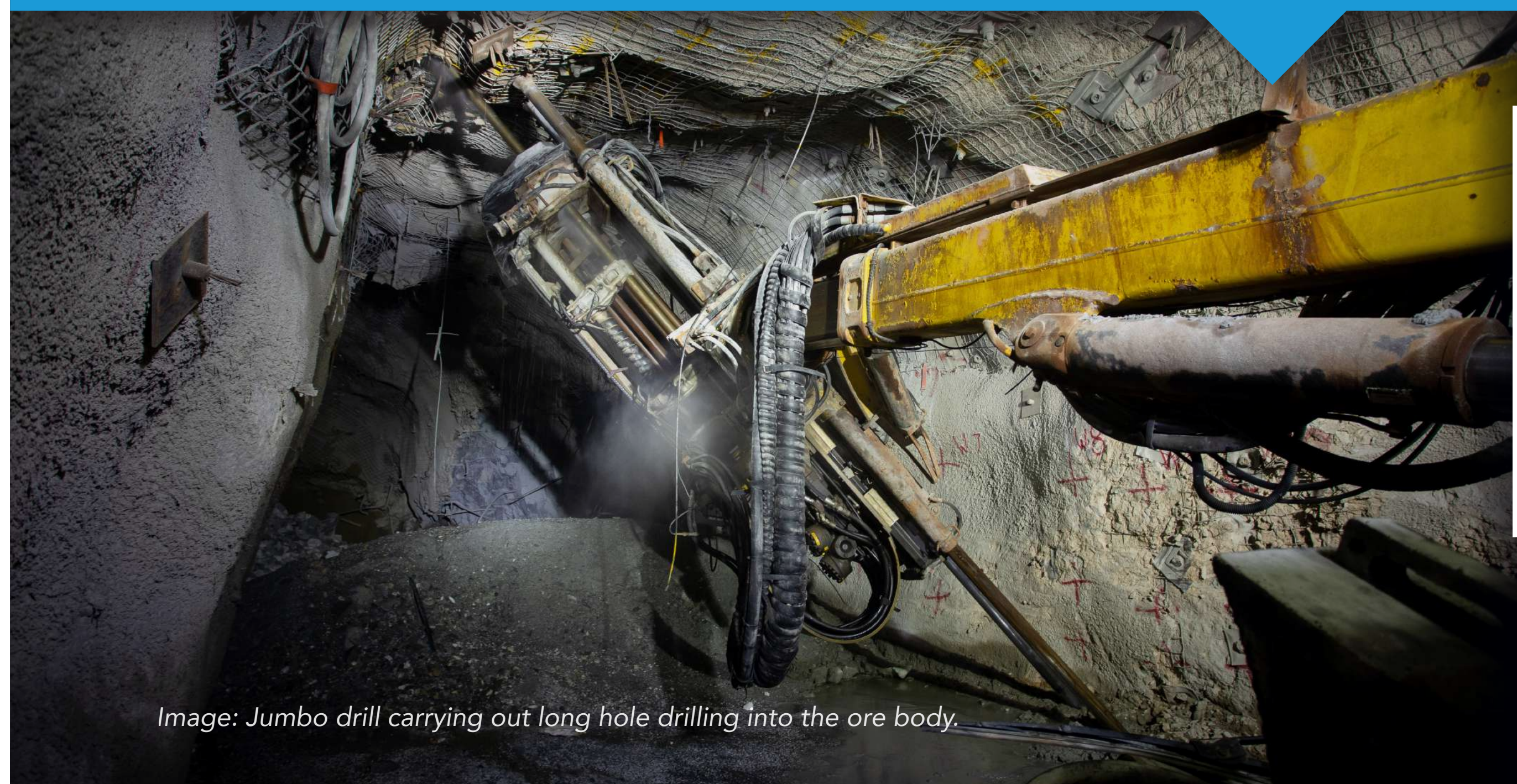
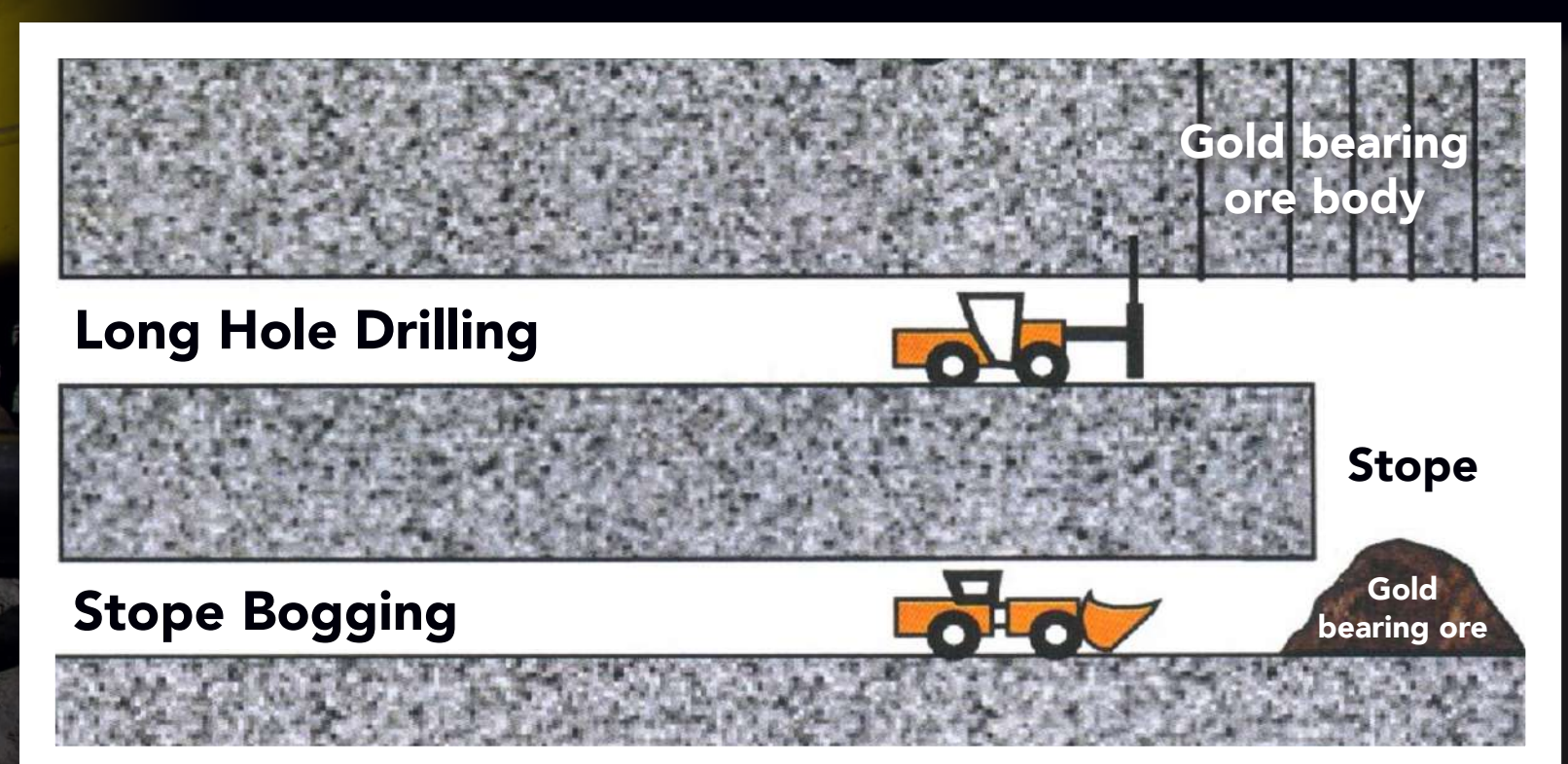


Image: Jumbo drill carrying out long hole drilling into the ore body.



The void that is created is called a stope.

The ore is then removed using the remote control Load Haul Dump machine or bogger, and placed into ore trucks.

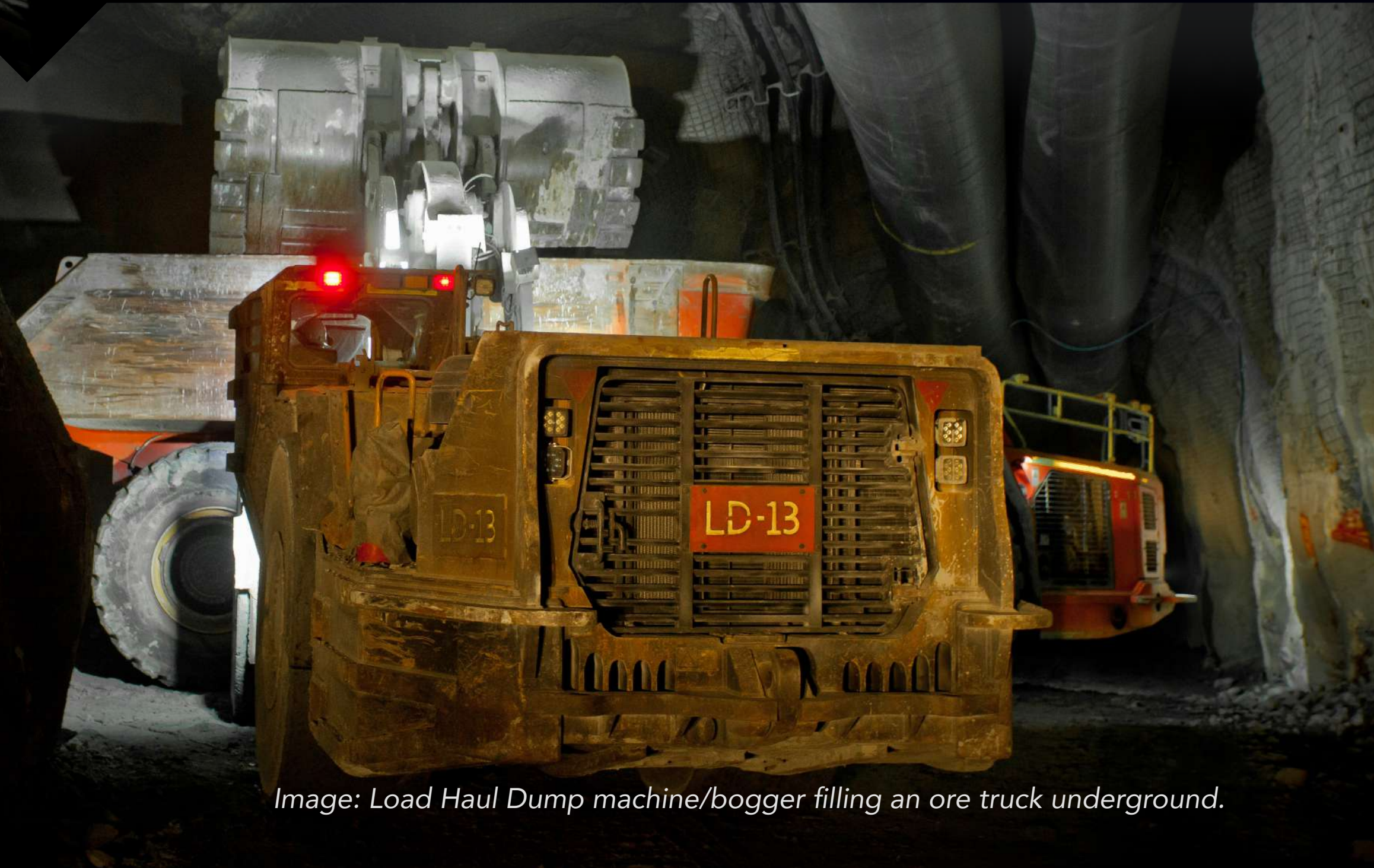
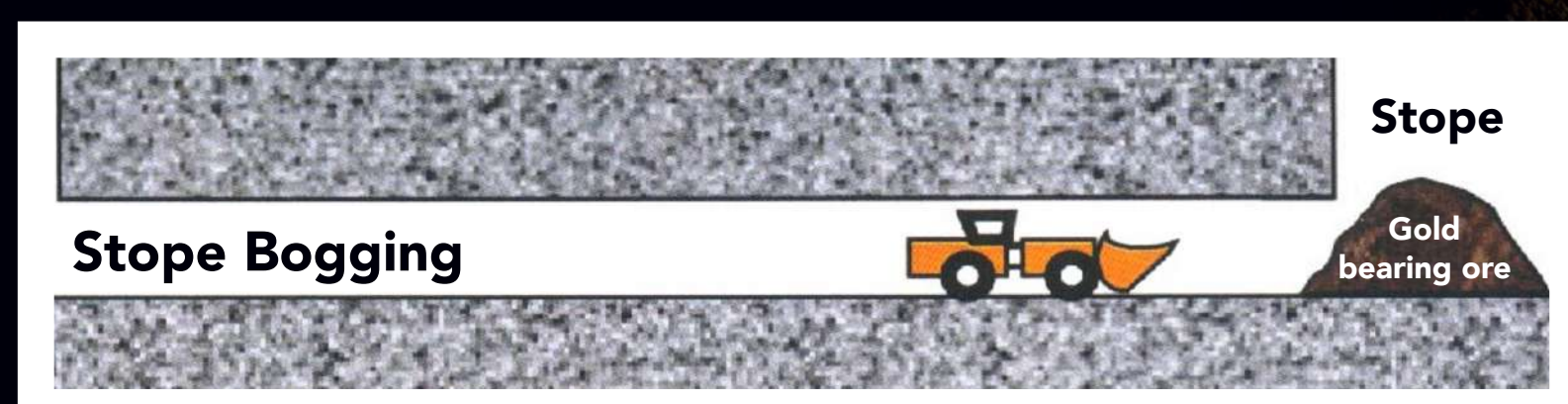


Image: Load Haul Dump machine/bogger filling an ore truck underground.



The trucks bring the ore to the surface and tip it on the stockpile in readiness for processing.